

24 —
02
24

— 10
03
24

#FFFFFF

twentysix

Chora Carleton
Erica van Zon
Suzanne Lustig
Bastiaan van Druten
Chloe Mason
Petra Scheuber

Six Wellington artists join forces to present #FFFFFF, an exhibition popping with colour.

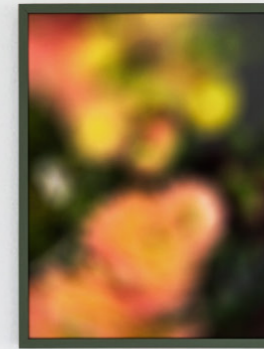
Inspired by a patchwork of influences, the artists of #FFFFFF draw on the vibrancy and joy of colour to connect to their individual practice. These colour lovers work in a variety of subject matter ranging from human spatial experience, ways of seeing, travel memories and the natural world.

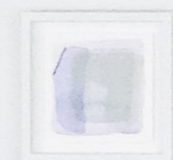
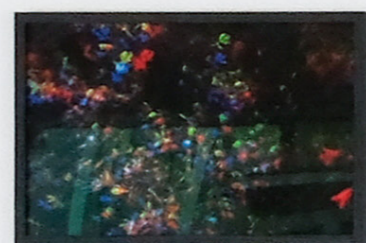
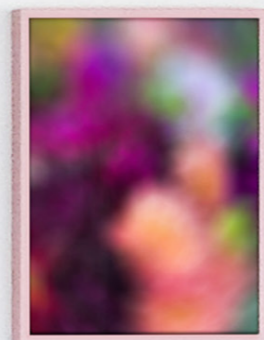
Working with photography, painting, watercolour and textiles, #FFFFFF is a salon celebrating colour-rich small-scale works showcased to run through during the vibrant Newtown Festival. Full of saturation, energy and focused intensity, the exhibition will run 24 February to 10 March at Twentysix Gallery.

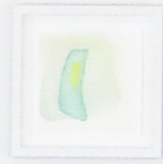
#FFFFFF

Inspired by a patchwork of influences, each artist draws from the vibrancy and joy of colour to connect to their individual practice. These colour lovers work in a variety of subject matter ranging from human spatial experience, ways of seeing, travel memories and the natural world.









Chora Carleton

As an artist I came to attune myself to the edge of the phenomenal horizon, where you can just almost grasp the vibrations of the light and internal structures of the materials and surfaces you encounter. I use colour as a primary language to describe these experiences. These drawings are in pairings, which dependant on first encounter observationally determines the 'original' and 'duplicate'. The confusion and questioning that bubbles up in the viewers experience is suggestive of a state of déjà vu or mental panic induced by challenging sensory environments.

chora.carleton@gmail.com





01

Split Vision /, 2024

Unique

Gouache, Watercolour and Pastel on Aquarelle
Watercolour Paper, White Frame, AR70 Glass

207 x 207 mm

\$600



02

Split Vision \, 2024

Unique

Gouache, Watercolour and Pastel on Aquarelle
Watercolour Paper, White Frame, AR70 Glass

207 x 207 mm

\$600



03

Split Vision), 2024

Unique

Gouache, Watercolour and Pastel on Aquarelle
Watercolour Paper, White Frame, AR70 Glass

207 x 207 mm

\$600



04

Split Vision ($,$ 2024)

Unique

Gouache, Watercolour and Pastel on Aquarelle
Watercolour Paper, White Frame, AR70 Glass

207 x 207 mm

\$600



05

Split Vision (<math><,</math> 2024)

Unique

Gouache, Watercolour and Pastel on Aquarelle
Watercolour Paper, White Frame, AR70 Glass

207 x 207 mm

\$600



06

Split Vision ($>,$ 2024)

Unique

Gouache, Watercolour and Pastel on Aquarelle
Watercolour Paper, White Frame, AR70 Glass

207 x 207 mm

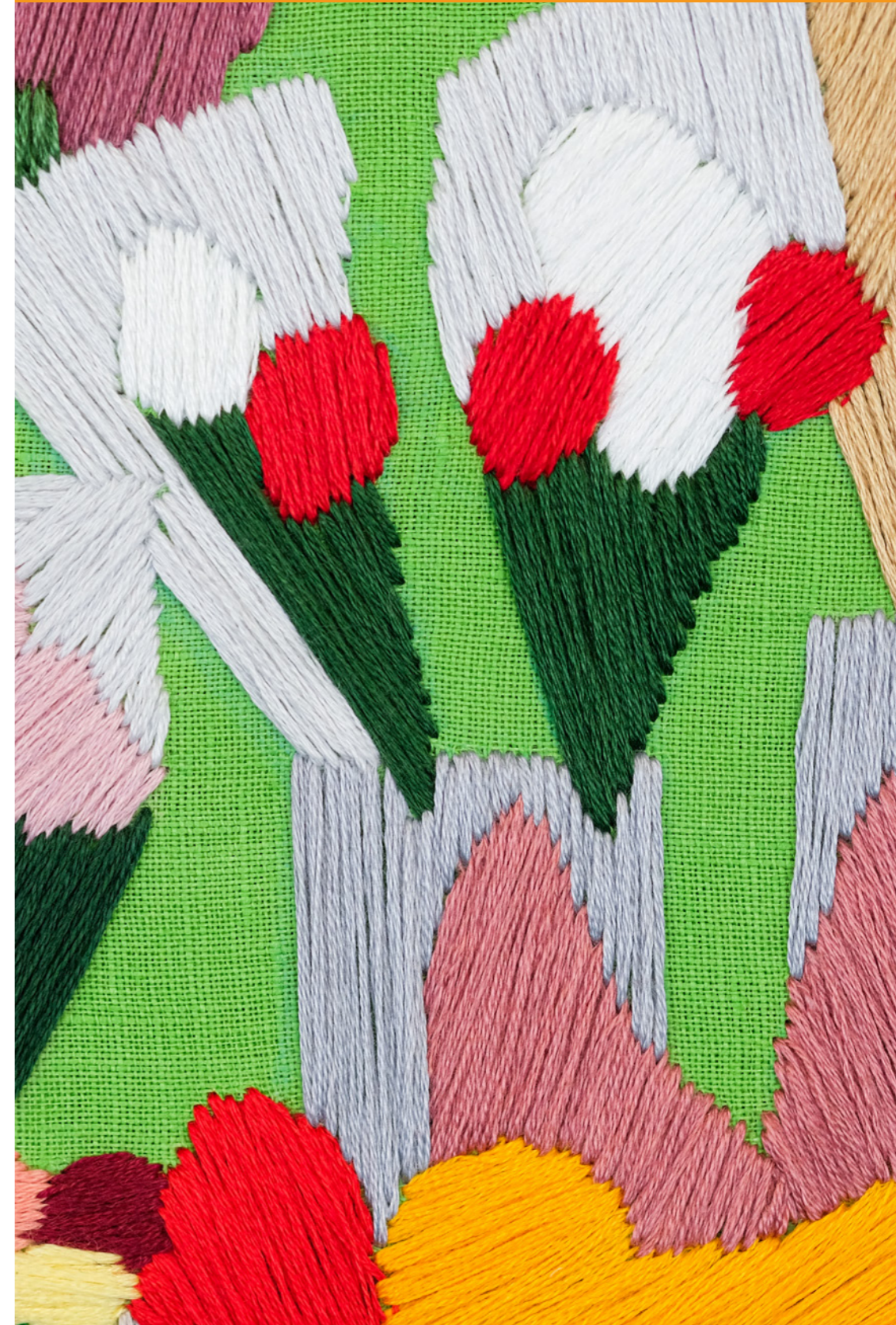
\$600

Erica van Zon

My work is inspired by personal memories, events and encounters within my local life and the wider world. I generally work with craft-based materials and processes, such as hand beading, embroidery and tapestry. Using humour, pastiche and parody to create bodies of work that form a collective understanding that is relived or revealed when viewed. I'm interested in things that are passed by easily or are at the end of their shelf life, recognising them before they are gone.

Erica van Zon's work is courtesy of Jhana Millers Gallery.

ericavanzon@yahoo.com.au





01

Supermarket Flowers #3, 2024 (Sold)

Unique

Embroidery cotton on linen, framed

425 x 425 mm

\$3,300



02

A Distant Memory, 2022

Unique

Embroidery cotton on cotton, framed

230 x 285 mm

\$2,500



03

Solar Star, 2019

Unique

Glass beads on linen, framed with UV glass

280 x 280 mm

\$2,600



04

Inverted Courtyard, 2018

Unique

Embroidery cotton on linen, framed

285 x 285 mm

\$2,400

Suzanne Lustig

I love working with materials like Indian ink and oil pastels, their resistance to manipulation forces me to negotiate, adapt and discover unexpected paths, resulting in artworks that possess depth and texture in a diverse range of hues that create a dynamic visual expression. It's like taking different trails in the forest and stumbling upon strange flowers and mushrooms. They bring a magical vibe with their fantastical appearance, creating a sense of escapism and light-heartedness.

info@suzannelustig.com





01

Violet Penny, 2024

Unique

Oilpastels, Indian ink, Hahnemühle watercolour,
Tasmanian Oak Frame, AR70 Glass

314 x 436 mm

\$950



02

Lost In The Woods, 2024

Unique

Oilpastels, Indian ink, Hahnemühle watercolour
300gsm, Multicoloured Frame, AR70 Glass

314 x 436 mm

\$950



03

Go Slow, 2024

Unique

Oilpastels, Indian ink, Hahnemühle watercolour,
Black Ash Frame, AR70 Glass

320 x 444 mm

\$950



04

Blue it, 2024 (Sold)

Unique

Oilpastels, Indian ink, Hahnemühle watercolour,
Green Mushroom Frame, AR70 Glass

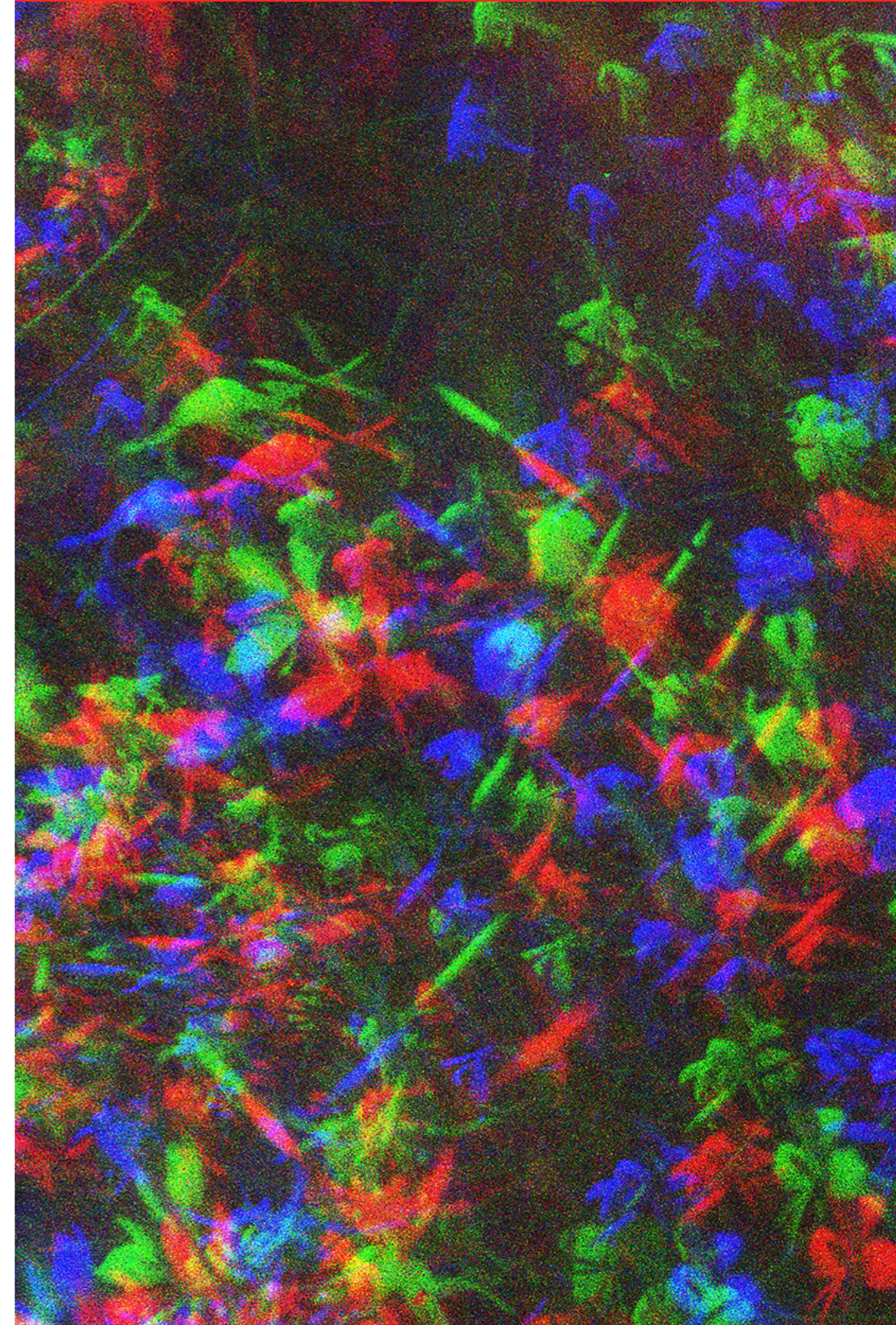
260 x 377 mm

\$990

Bastiaan van Druten

The hands-on, analogue photographic process as a tools for image making. Not just capturing a single moment, but instead, opening up the moment of creation, to beyond the shutter speed. The messy-ness and uncertainty of the process is a great antidote to the clinical and instant nature of the digital world.

b.druten@gmail.com





01

Tri palm, 2024

5 + AP

Giclée Hahnemühle Photo Rag 188gsm,
Ash Frame, Black, AR70 Glass

320 x 480 mm

\$650



02

Tri sign, 2024

5 + AP

Giclée Hahnemühle Photo Rag 188gsm,
Ash Frame, Black, AR70 Glass

320 x 480 mm

\$650



03

Tri flower, 2024

5 + AP

Giclée Hahnemühle Photo Rag 188gsm,
Ash Frame, Black, AR70 Glass

480 x 320 mm

\$650

Chloe Mason

I aim to consolidate time spent in both natural environments and the darkroom, where I acknowledge parallels between eco-somatic experience, analog photography and filmmaking. I am currently drawing from new materialist and hydro feminist theory, in order to document the ways non-human entities already represent themselves.

These prints display 4x5" sheet film, previously buried amongst mounds of seaweed, visualising the seashore reacting with the film emulsion and providing a platform for the non-human to express upon.

chloemason550@gmail.com





01

Gift from the sea #1, 2023

3 + 1 AP

Hahnemühle Photo Rag Print, Warm Black Frame,
AR70 Glass

220 x 276 mm

\$600



02

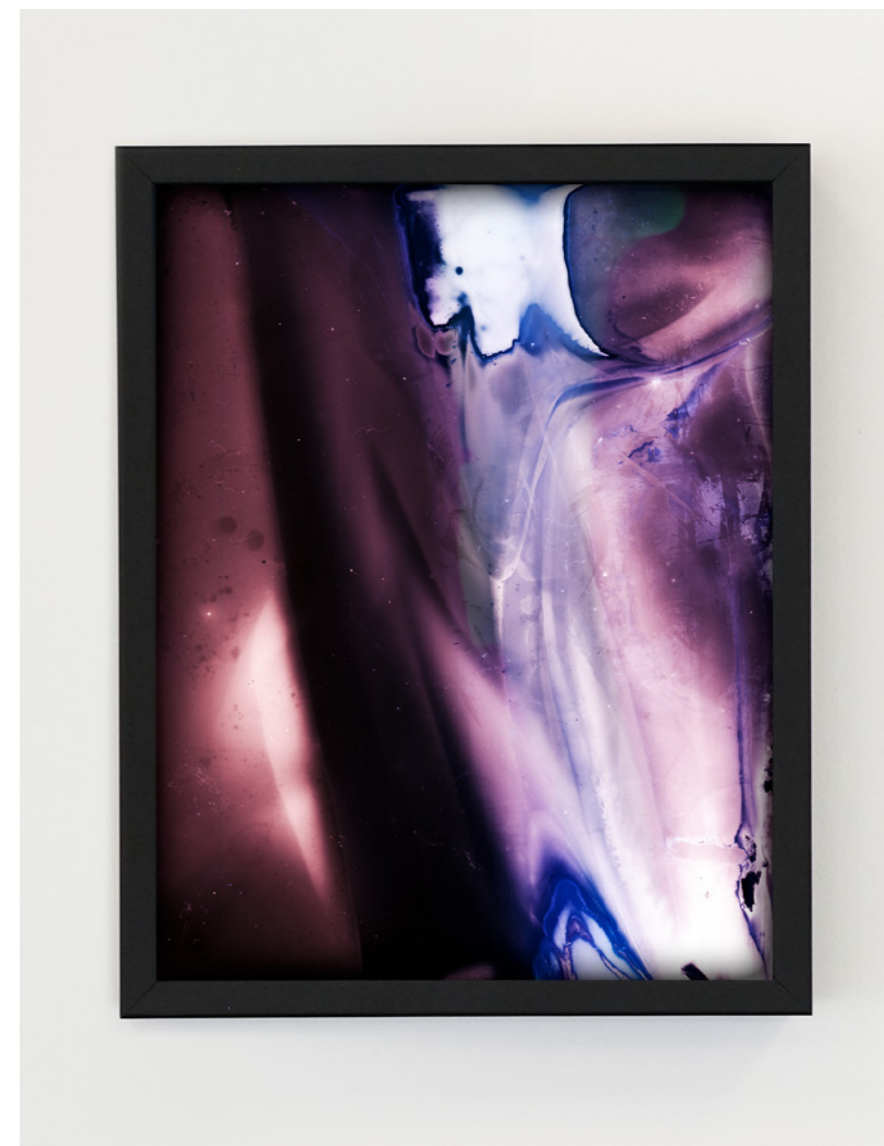
Gift from the sea #2, 2023

3 + 1 AP

Hahnemühle Photo Rag Print, Warm Black Frame,
AR70 Glass

220 x 276 mm

\$600



03

Gift from the sea #3, 2023

3 + 1 AP

Hahnemühle Photo Rag Print, Warm Black Frame,
AR70 Glass

220 x 276 mm

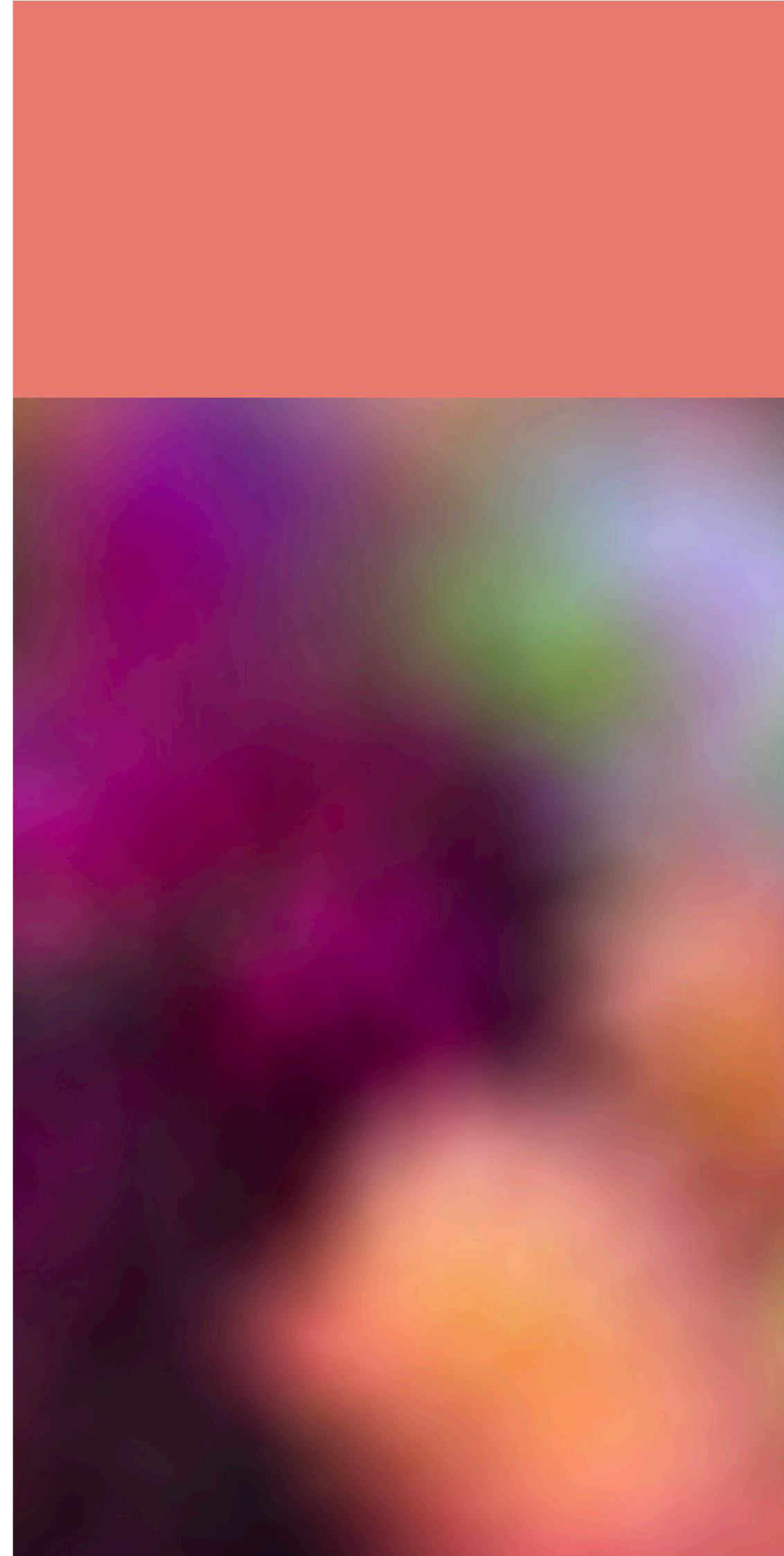
\$600

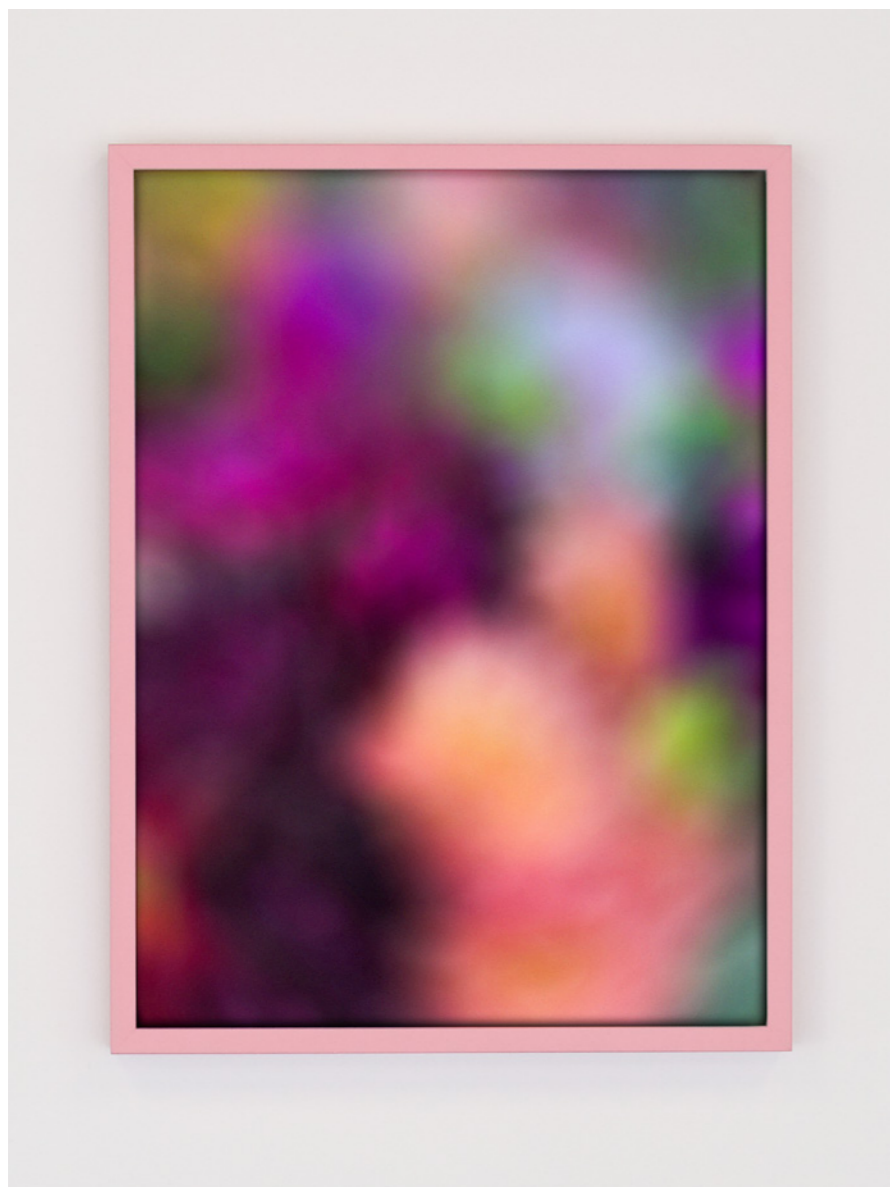
Petra Scheuber

I'm a colour lover, and in my latest series, Soft Vision, I intentionally dissolve clarity into vibrant colour fields. With a deliberate choice to embrace soft focus, to me, these images serve as a visual language of colour, each narrating its own story. Within this artistic landscape, the mood takes centre stage, portraying emotions that are personal and impermanent.

Dreamland is a series of rainbow-hued images that delve into the beauty and magic of light in nature. By manipulating and playing with its energy, I aim to create innovative and illusory visions that transport the viewer to a world beyond reality. The series showcases the interplay between light, colour, and form, resulting in ethereal environments which invite the viewer to embark on a journey of imagination. Through this series, I hope to spark a sense of joy, delight, and wonder in the viewer, encouraging them to look at the world with fresh eyes.

info@petrascheuber.com





01

Soft Vision #1: Secret Garden, 2024

Unique

Archival Pigment Ink Print on Hahnemühle
German Etching, Altrose Frame, AR70 Glass

345 x 458 mm

\$1,100



02

Soft Vision #2: Hinterland, 2024

Unique

Archival Pigment Ink Print on Hahnemühle
German Etching, Olive Frame, AR70 Glass

345 x 458 mm

\$1,100



03

Dreamland N°2: Motion, 2021

3 + 1 AP

Archival Pigment Ink Print on Hahnemühle German
Etching, Organically-shaped Frame Wasabi

320 x 450 mm

\$950



04

Dreamland N°12: Breeze, 2021

3 + 1 AP

Archival Pigment Ink Print on Hahnemühle
German Etching, Organically-shaped Frame Violet

335 x 460 mm

\$950

#FFFFFF

Inspired by a patchwork of influences, each artist draws from the vibrancy and joy of colour to connect to their individual practice. These colour lovers work in a variety of subject matter ranging from human spatial experience, ways of seeing, travel memories and the natural world.



twentysix

Twentysix Gallery
26 Constable Street
Newtown
Wellington 6021
New Zealand

hello@twentysix.co.nz
www.twentysix.co.nz