

Moments of Mystery

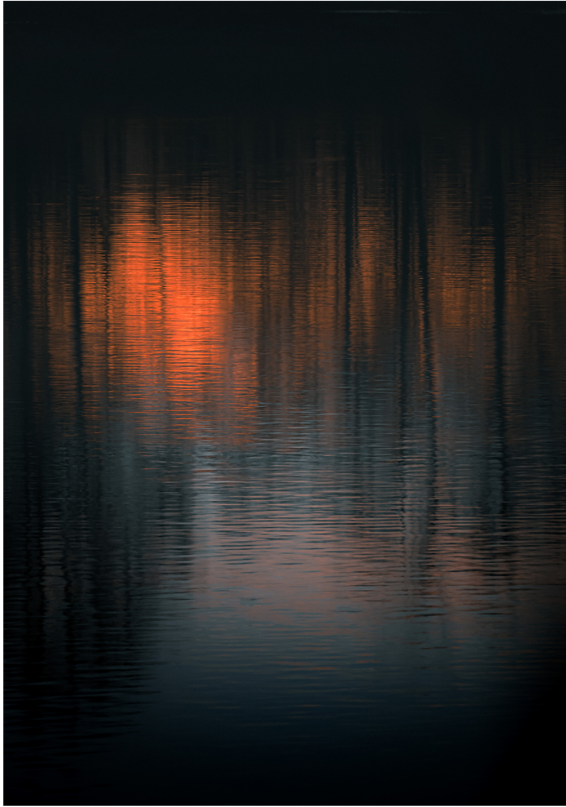
Richard Thurston's works explores the mysteries of abstracted seascapes, through the medium of photography.

His photography investigates the allure of the unknown, an intrigue into the unfamiliar. His intention is to transcend moments of mystery into the pathways of forgotten dreams.

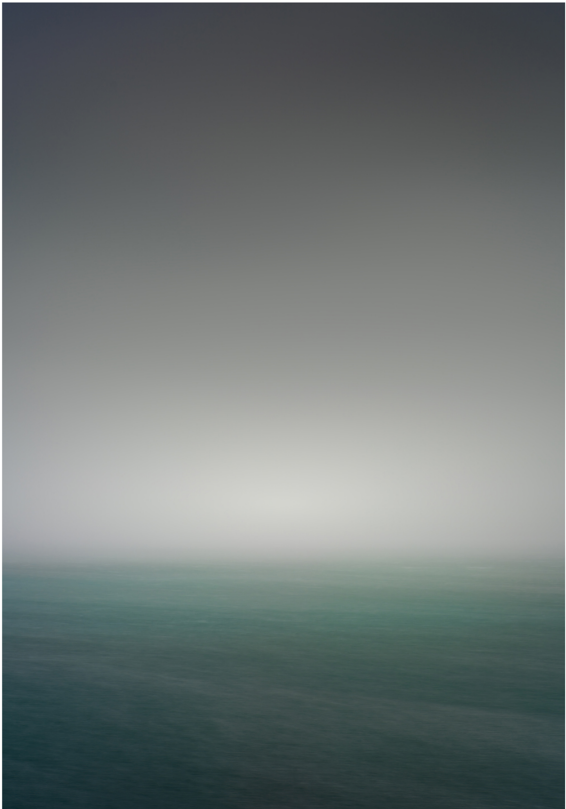
He is embracing an inherent human emotion of apprehension that resides in our states of the sub consciousness. The apprehension into the unknown can be overcome once the doors of perception are cleansed and the promise of acquiring a soulful wisdom will then be received.



Moments of Mystery, 2024
Giclée Prints on Archival
Hahnemuhle Photo Rag 308 gsm
Mounted onto 10mm Archival Kapa Board
Limited edition 1/3
Size, 1100 x 1466mm
Framed in Anti Reflective UV70 Glass
Signed Certificate of Authenticity attached
\$4800.00



Painting the Lake, 2024
Giclée Prints on Archival
Hahnemuhle Photo Rag 308 gsm
Mounted onto 10mm Archival Kapa Board
Limited edition 1/3
Size, 1100 x 1466mm
Framed in Anti Reflective UV70 Glass
Signed Certificate of Authenticity attached
\$4800.00



Forgotten Memories, 2024
Giclée Prints on Archival
Hahnemuhle Photo Rag 308 gsm
Mounted onto 10mm Archival Kapa Board
Limited edition 1/3
Size, 1100 x 1466mm
Framed in Anti Reflective UV70 Glass
Signed Certificate of Authenticity attached
\$4800.00

Floating In a Sea of Love

Christina Little

The Taputeranga Marine Reserve is a sea of love, a Marine Reserve off the coast of Island Bay in Pōneke Wellington. It has been returned to health, back from the brink by beautiful forward-thinking people and organisations, who in 2008 were successful in getting the 9 square kilometre area classified as a protected Marine Reserve. Since then, even more fabulous people and organisations have helped return the area back to the sea of love it is today, for the benefit of all.

Floating In a Sea of Love is the start of a photographic body of work of the magnificence of the Taputeranga Marine Reserve. These first featured works include two diptych combinations and three single works.

Photographs are printed on Hahnemühle Photo Rag paper, a white cotton paper with a smooth texture and a mildly defined felt pattern that gives the work a three-dimensional appearance.

Each work is presented in a custom-moulded unique shape, and several of the works are framed with unique experimental interlocking angles.



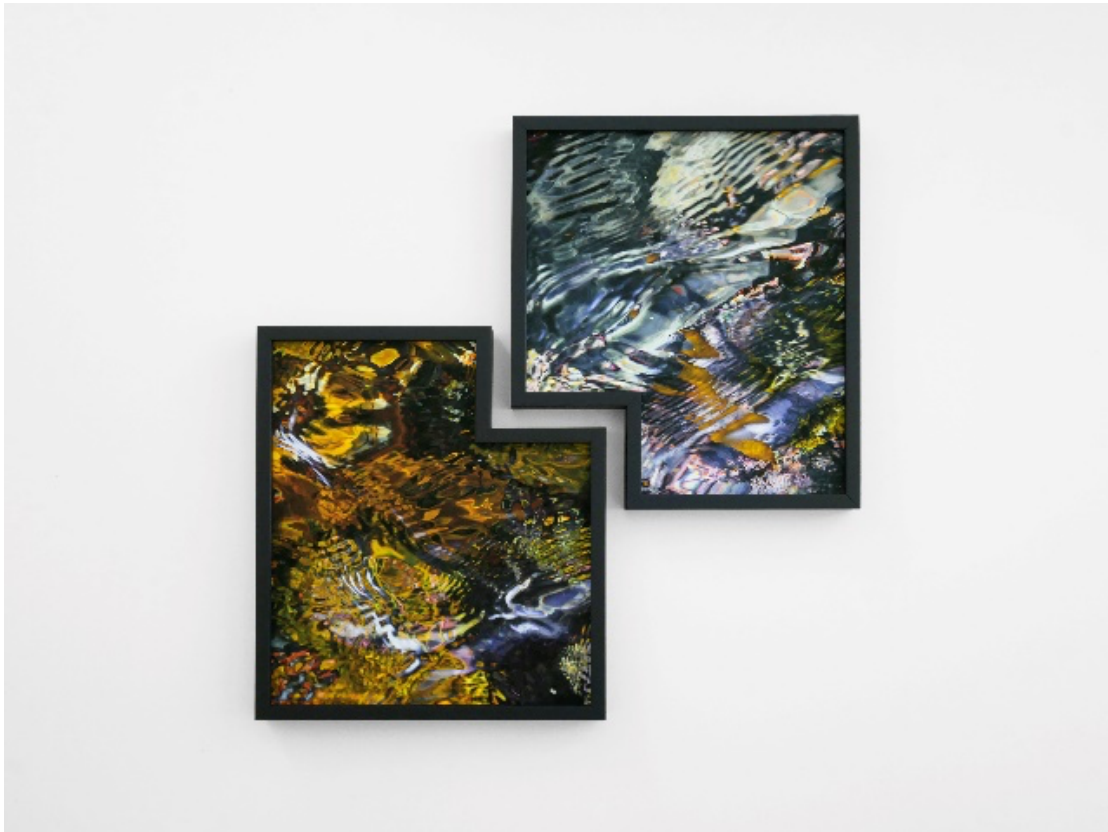
Floating In a Sea of Love #1

Hahnemühle Photo Rag 308gsm

Framed with anti-reflective AR70

470x600mm

\$3,000.00



Floating In a Sea of Love #2 (Diptych)

Hahnemühle Photo Rag 308gsm

Framed with anti-reflective AR70

Combined diptych 500x590mm

\$2,800.00



Floating In a Sea of Love #3

Hahnemühle Photo Rag 308gsm

Framed with anti-reflective AR70

290x230mm

\$800



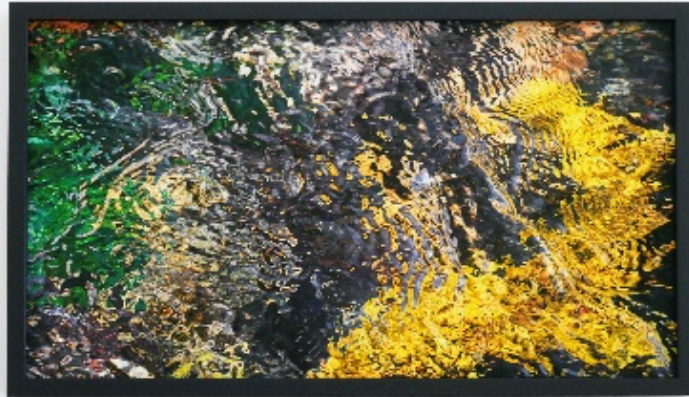
Floating In a Sea of Love #4 (Diptych)

Hahnemühle Photo Rag 308gsm

Framed with anti-reflective AR70

Combined diptych 420x490mm

\$2,400



Floating In a Sea of Love #5

Hahnemühle Photo Rag 308gsm

Framed with anti-reflective AR70

470x270mm

\$1,300

Light, love, darkness - Lara Gilks

Project Statement

This series draws on a thread of disquiet, disharmony, foreboding.

A gown: ascending, graceful, peaceful, beautiful, sparkling in the surface light, drawing her up: but at the same time descending, floating momentarily above the ominous darkness, the haunting depths drawing her down.

Through these works I explore themes we see in everyday life: love, loss, light, pain, beauty, darkness, mystery and the unknown. The works confront the question of why something so beautiful floats so fragile against the darkness.

You can only truly see light, against the dark.

Featured Work



From the deep #2, 1/5 +AP

Giclée print on archival Hahnumuhle photo

rag 308gsm paper

Framed in a painted hardwood

Anti reflective Artglass AR70

785mm x 1150mm

\$3700.00



From the deep, 2/5 +AP
Giclée print on archival Hahnumuhle
photo rag 308gsm paper
Framed in a painted hardwood
Anti reflective Artglass AR70
825mm x 560mm
\$3200.00



From the deep #3, 1/5 +AP
Giclée print on archival Hahnumuhle
photo rag 308gsm paper
Framed in a painted hardwood
Anti reflective Artglass AR70
825mm x 560mm
\$3200.00



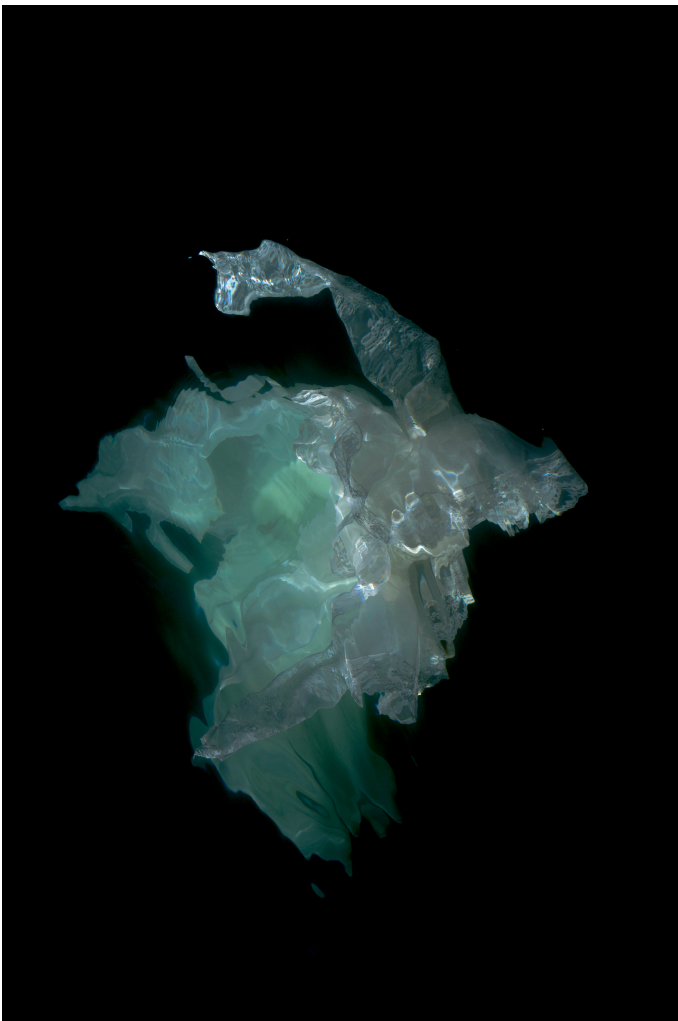
From the deep #4, 1/5 +AP
Giclée print on archival Hahnumuhle
photo rag 308gsm paper
Framed in a painted hardwood
Anti reflective Artglass AR70
825mm x 560mm
\$3200.00



To the deep, 1/5 +AP
Giclée print on archival Hahnumuhle
photo rag 308gsm paper
Framed in a painted hardwood
Anti reflective Artglass AR70
825mm x 560mm
\$3200.00



To the deep #2, 1/5 +AP
Giclée print on archival Hahnumuhle
photo rag 308gsm paper
Framed in a painted hardwood
Anti reflective Artglass AR70
825mm x 560mm
\$3200.00



To the deep #3, 1/5 +AP
Giclée print on archival Hahnumuhle
photo rag 308gsm paper
Framed in a painted hardwood
Anti reflective Artglass AR70
825mm x 560mm
\$3200.00